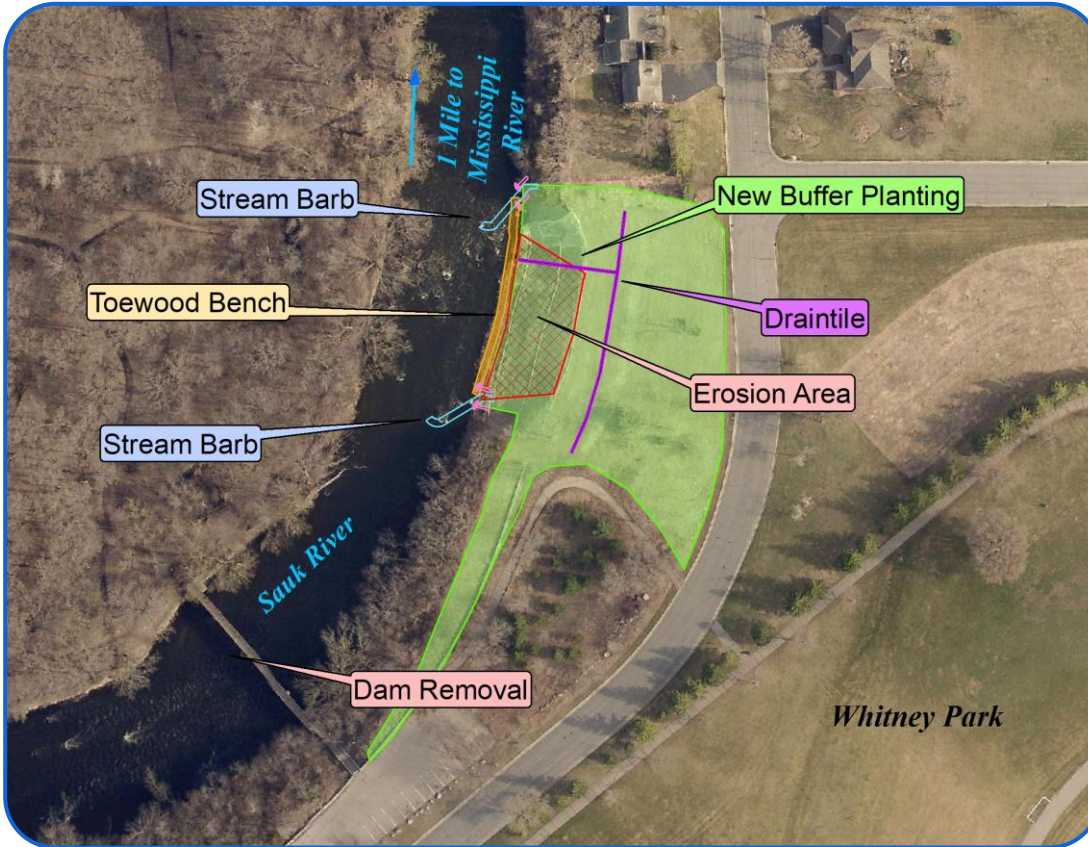


City of St. Cloud – Whitney Park Project

Dam Removal & Sauk River Streambank Stabilization



Practice:

Dam Removal & Streambank Restoration

Target Waters:

Sauk River

Year Constructed:

2016 - 2017

Components:

- Field Stone Stream Barbs
- Toe Wood
- Sediment Logs
- Erosion Control Blanket
- Native Vegetation

Benefits:

- Sediment Reduction
- Habitat Value
- Protect Property
- Water Quality Improvement

Partners:

- West Central TSA
- City of St. Cloud
- Sauk River Watershed District
- MN DNR

Watershed:

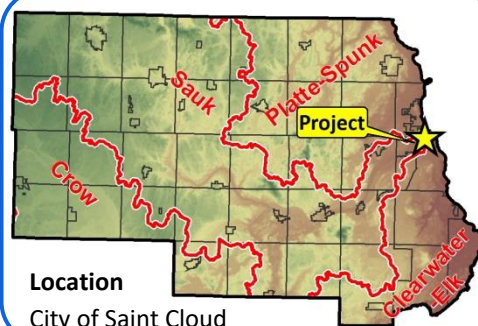
Sauk River

Project Description:

The Whitney Park site on the Sauk River had a severely eroded outside bank. This steep slope along 450 feet of streambank has areas that are up to 30 feet in elevation. The City of St. Cloud approached the Stearns County SWCD for technical and financial assistance to address the problem. The SWCD, along with the West Central Technical Service Area, designed a low impact approach to stabilizing the streambank. The project involved constructing a toe wood bench and using field stone rock for stream barbs. In addition, when the slope was re-graded, a native grass and wildflower seeding was completed. Trees and shrubs were also planted from potted stock. The entire site was covered with erosion control blanket to ensure stabilization. As a part of the project, the low head dam in the river upstream of the slope failure was determined to be causing the streambank erosion problem and was removed.

Pollution Reduction Estimates:

Phosphorus	389 Lbs/Yr.
Sediment	388 Tons/Yr.



Location
City of Saint Cloud

Stearns County Soil and Water Conservation District
110 2nd Street South, Waite Park, MN 56387

Ph.: 320/251-7800 x3
www.stearnscountyswcd.net

City of St. Cloud – Whitney Park Project

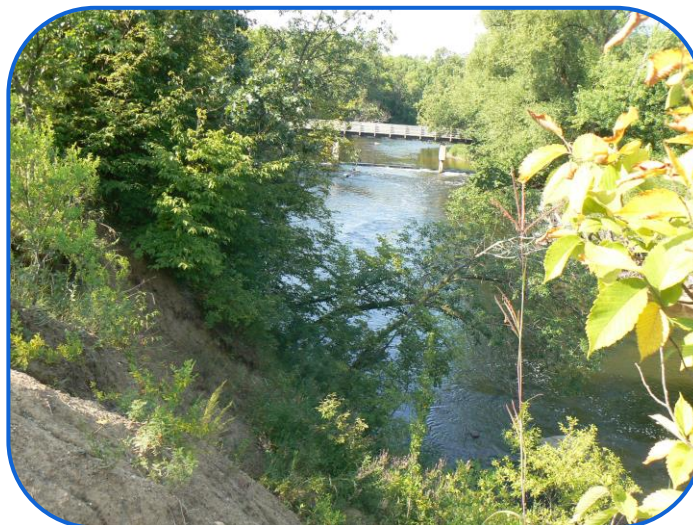
Dam Removal & Sauk River Streambank Stabilization



“The coordination on this project to solve a major water resource concern was outstanding. Removing the dam to assist with a resource issue is no easy task” – Greg Berg, Stearns County SWCD Lakeshed Specialist



Before Project – Failing Slope



Before Project – Habitat Degradation



During Streambank Stabilization



After Streambank Stabilization



After Streambank Stabilization

Funding:

State Funds*	\$ 337,999
City of St. Cloud (In-kind)	\$ 15,813

* Administered by the City of St. Cloud, Stearns County SWCD and Sauk River Watershed District
BWSR Clean Water Fund and DNR CPL