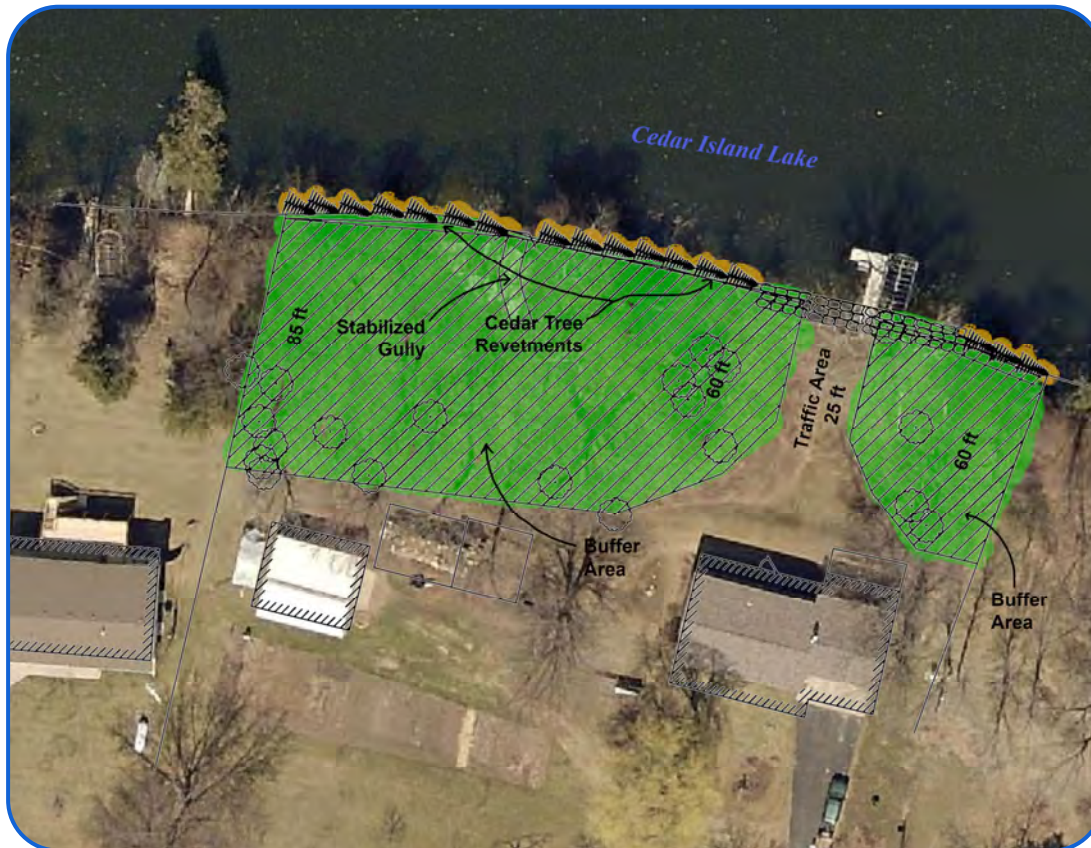


Shoreline Stabilization Project

2009 Cedar Island Lake



Practice:

Shoreline Stabilization

Target Waters:

Cedar Island Lake

Year Constructed:

2009

Components:

- Gully Stabilization
- Cedar Tree Revetments
- Native Vegetation

Benefits:

- Erosion Control
- Reduced Water Runoff
- Sediment & Nutrient Reduction
- Fish & Wildlife Habitat

Partners:

- Landowner
- Stearns County SWCD
- MN DNR
- BWSR

Watershed:

Sauk River

Project Description: This project combined a unique design and implementation which took care of an existing gully as well as erosion along the shoreline. Cedar Tree Revetments were used to stabilize the shoreline and allow the native vegetation to establish. The landowners desired to leave a large area along the shoreline natural and not mowed.

Pollution Reduction Estimates:

Phosphorus	6	Lbs/Yr
Sediment	6	Tons/Yr



Stearns County Soil and Water Conservation District
110 2nd Street South, Waite Park, MN 56387

Ph: 320-251-7800 x3
www.stearnscountyswcd.net

Shoreline Stabilization Project

2009 Cedar Island Lake



Before Shoreline Restoration



Shoreline Restoration Site Preparation



Cedar Tree Revetment Installation



Gully Stabilization



After Shoreline Restoration

"The landowners have enjoyed the project so much since it was first established, they have let it increase in size. What a great example of multiple practices working together to benefit water quality of the lake."— Greg Berg, Stearns County SWCD Lakeshed Specialist

Funding :

State Funds*	\$	10,334
Landowner Investment	\$	3,436

* Administered by Stearns SWCD – MN DNR AHR, BWSR

State CS & Native Buffer