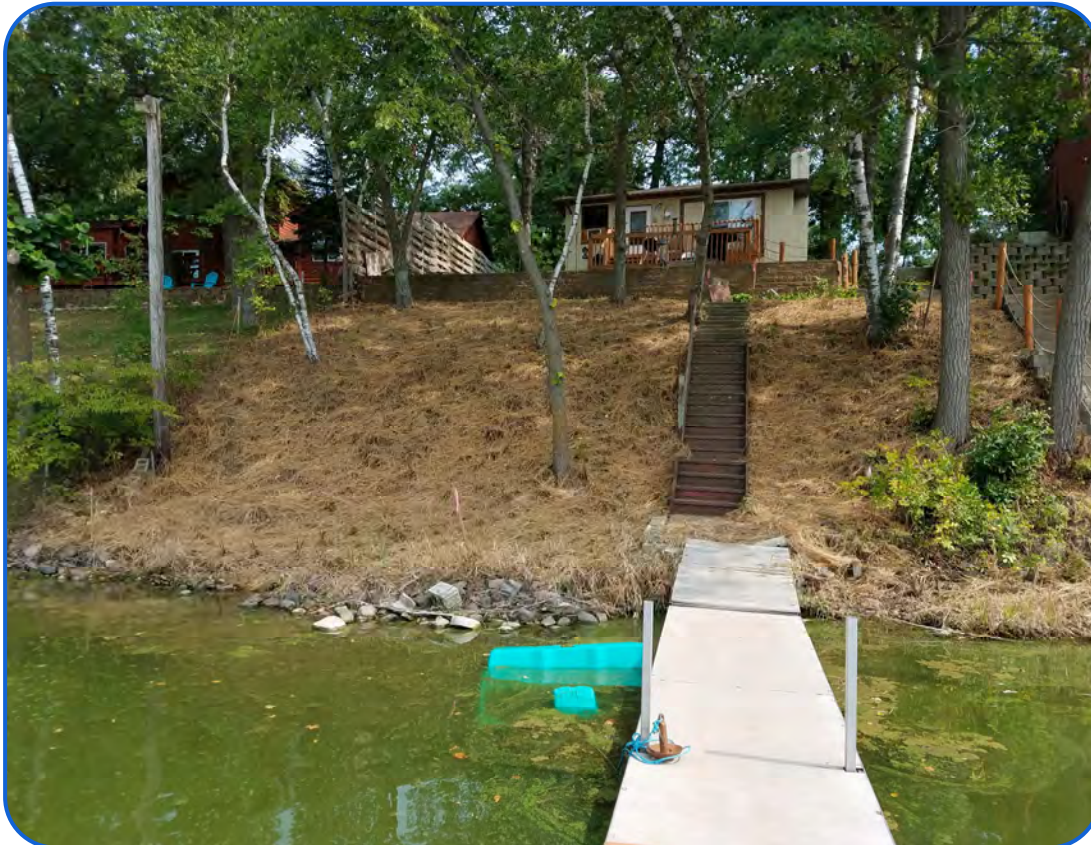


Shoreline Restoration Project

2017 Rice Lake, Koronis Lake,
and North Fork Crow River



Practice:

Shoreline Restoration

Target Waters:

Rice Lake & Lake Koronis
North Fork Crow River

Year Constructed:

2017

Components:

- Native Grass Planting
- Wildflower Planting
- Shrub Planting
- Weed Free Straw Mulch

Benefits:

- Sediment Reduction
- Nutrient Reduction
- Natural Aesthetics
- Wildlife Habitat

Partners:

- Landowner
- West Central TSA
- Rice Lake Association
- Koronis Lake Association

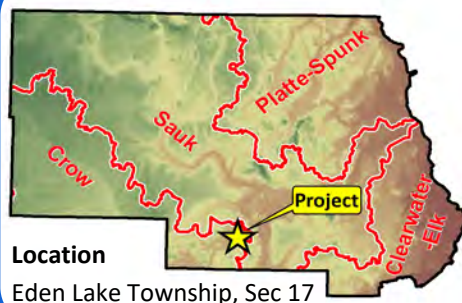
Watershed:

North Fork Crow River
Watershed

Project Description: This property on Rice Lake has a continuous slope from the building site to the lake. Before the project was constructed, a storage shed existed that was dug into the slope along the lake. In addition, the shoreline had little to no buffer and had been mowed or trimmed regularly. The landowner took the initiative to restore the entire shoreline on the property except for a small area to allow access to the dock.

Pollution Reduction Estimates:

Phosphorus	0.1	Lbs/Yr
Sediment	0.1	Lbs/Yr



Location

Eden Lake Township, Sec 17

Stearns County Soil and Water Conservation District
110 2nd Street South, Waite Park, MN 56387

Ph: 320-251-7800 x3
www.stearnscountyswcd.net

Shoreline Restoration Project

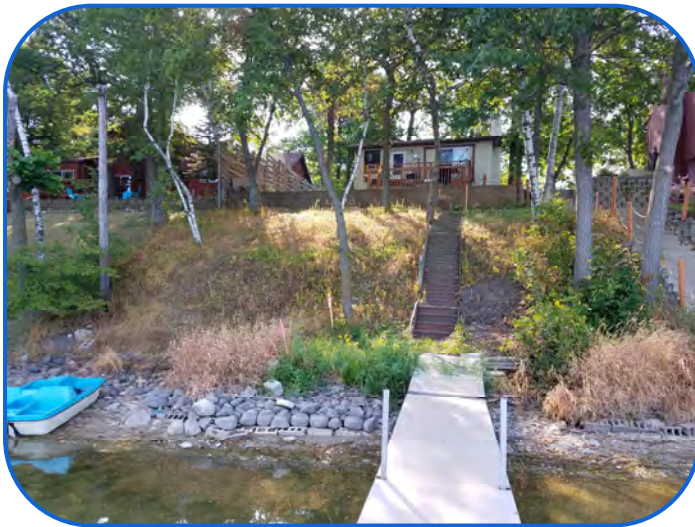
2017 Rice Lake, Koronis Lake, and North Fork Crow River



Before Shoreline Restoration



Before Shoreline Restoration



During Shoreline Restoration



After Shoreline Restoration



After Shoreline Restoration

"The landowner desired to create a natural shoreline with the goal of treating the water runoff from the property before it enters the lake, while also setting an example for other lake residents to see" – Greg Berg, SWCD Lakeshed Specialist

Funding:

State Funds*	\$ 3,263.25
Landowner Investment	\$ 487.75
Rice Lake Association	\$ 300.00
Koronis Lake Association	\$ 300.00

* Administered by Stearns SWCD
BWSR Clean Water Fund