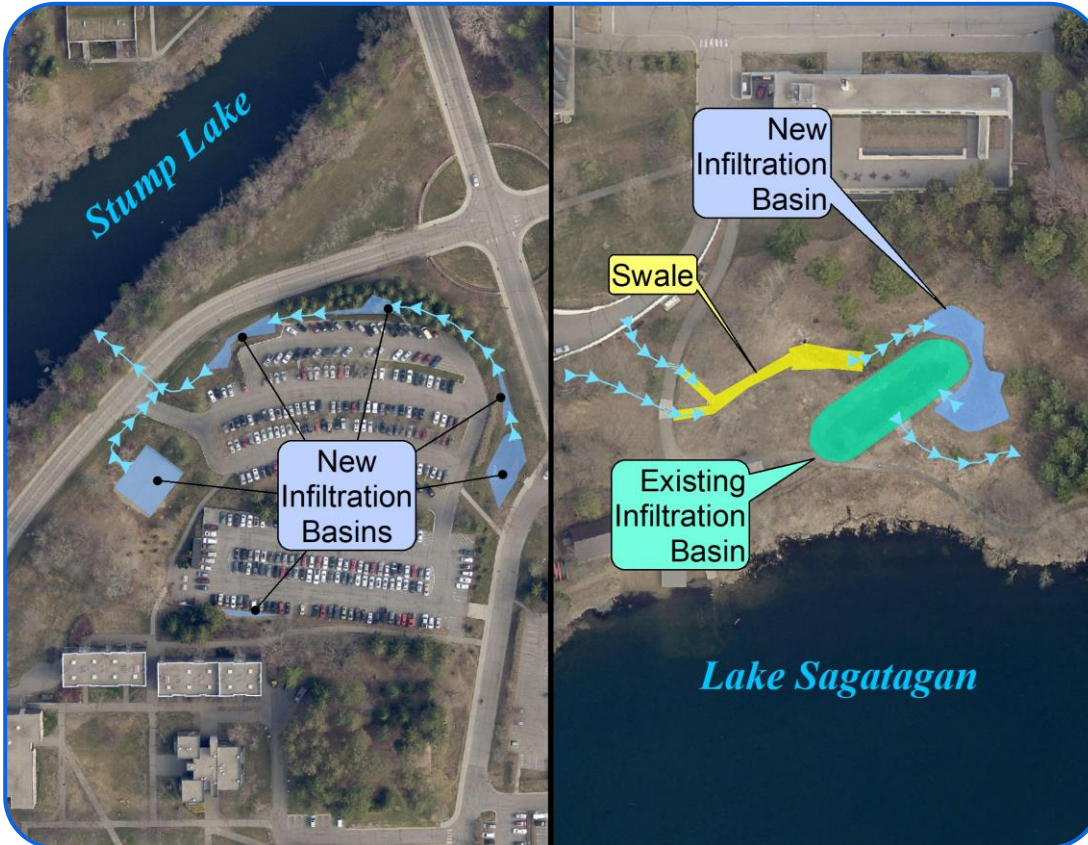


St. John's University

Storm Water Treatment



Practice:

Storm Water Treatment

Target Waters:

Stump Lake & Lake Sagatagan

Year Constructed:

2016

Components:

- Infiltration Basins
- Clean Water Pipes
- Earthen Diversions

Benefits:

- Pollution Reduction
- Improve Water Quality

Partners:

- St. John's University
- BWSR
- Stearns County SWCD
- West Central Technical Service Area

Watershed:

Platte-Spunk

Project Description: As part of an infrastructure updates the College of St. John's University wanted to incorporate some practices that would provide additional treatment of storm water runoff on campus coming from buildings, parking areas and other developed areas prior to the water entering Stump Lake and Lake Sagatagan. The Stearns County SWCD applied for a Clean Water Fund grant to help get this project completed. Storm water was directed into vegetated Infiltration basins to allow for treatment and infiltration of the storm water coming off the campus. This greatly reduces the amount of pollution entering these local lakes.

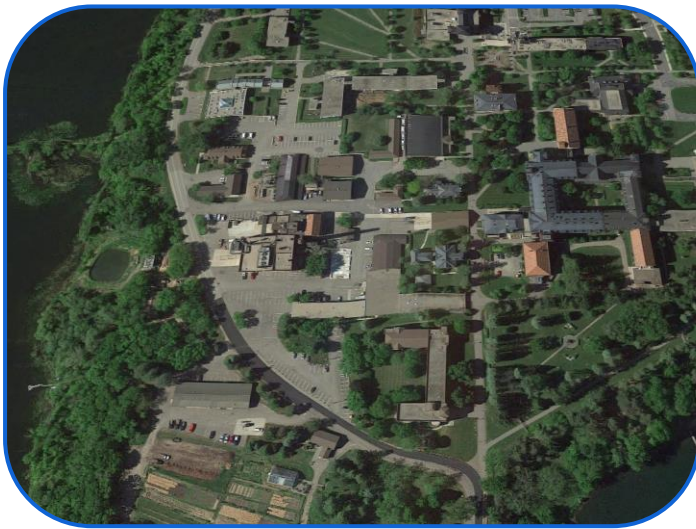
Pollution Reduction Estimates:

Phosphorus	3.77	Lbs/Yr
Sediment (TSS)	1,225	Tons/Yr



Stearns County Soil and Water Conservation District
110 2nd Street South, Waite Park, MN 56387

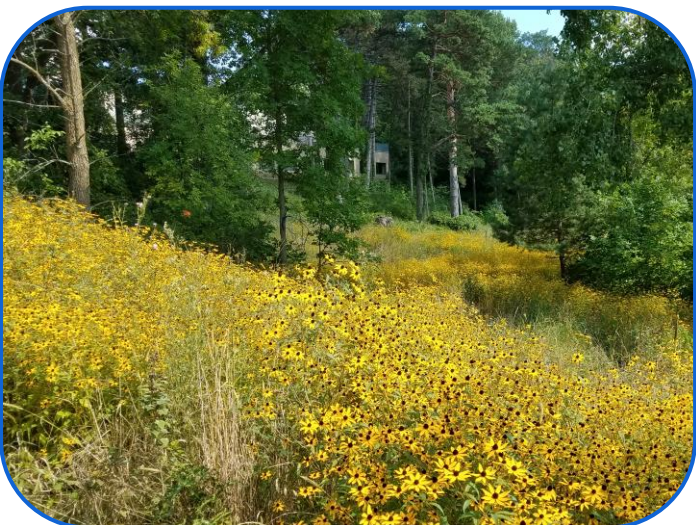
Ph: 320-251-7800 x3
www.stearnscountyswcd.net



Existing Highly Impervious Landscape



Water Diversions/Infiltration Basins (Before)



Water Diversions/Infiltration Basins (After)

"It was great working with St John's University. They were being proactive in addressing water quality concerns and were willing to work with some pretty creative solutions to ensure Stump Lake and Lake Sagatagan can maintain a great level of water quality for years to come."

– Greg Berg, Stearns County SWCD Lakeshed Specialist



Infiltration Trench Along a Parking Lot



Volleyball Court Amended to an Infiltration Basin

Funding:

State Funds*	\$	167,475
SJU	\$	139,055

* Administered by Stearns SWCD
BWSR Clean Water Fund