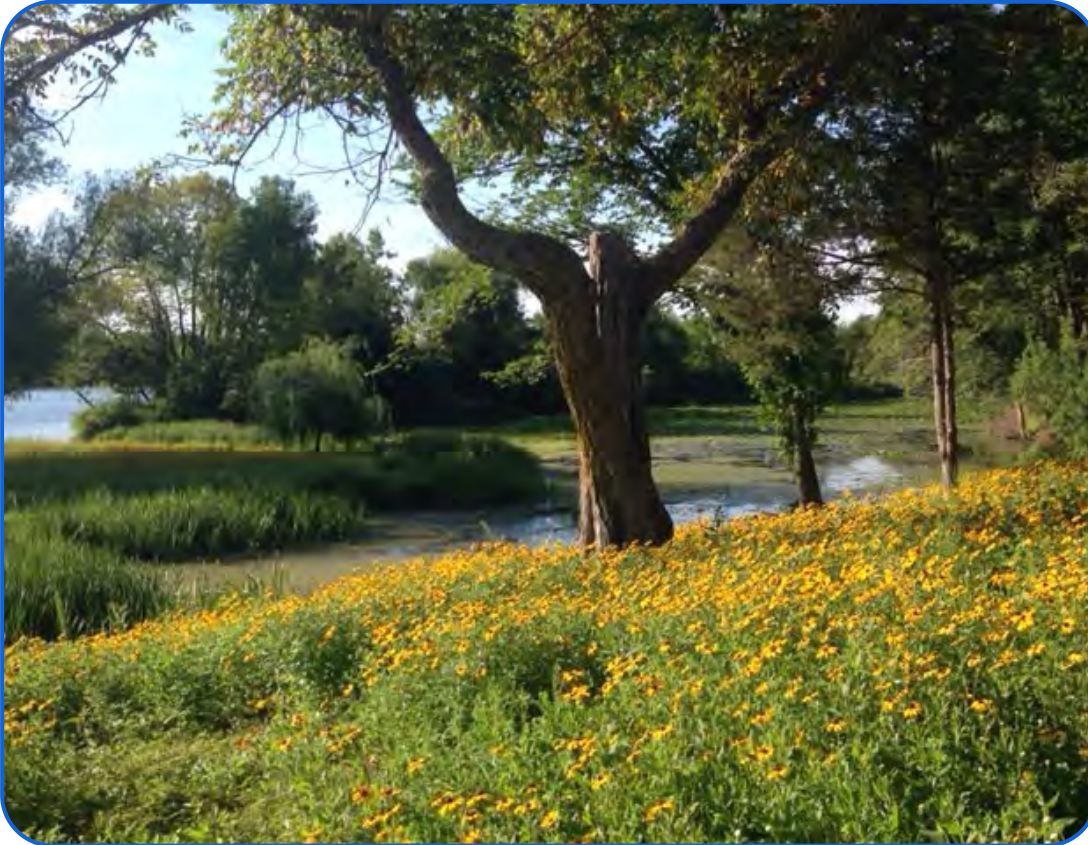


Shoreline Restoration Project

2014 Mississippi River



Practice:

Shoreline Restoration

Target Waters:

Mississippi River

Year Constructed:

2014

Components:

- Native Grass Planting
- Wildflower Planting
- Shrub Planting
- Erosion Control Blanket

Benefits:

- Sediment Reduction
- Nutrient Reduction
- Natural Aesthetics
- Wildlife Habitat

Partners:

- Landowner
- Stearns County SWCD
- West Central TSA
- MN DNR
- Stearns County ESD

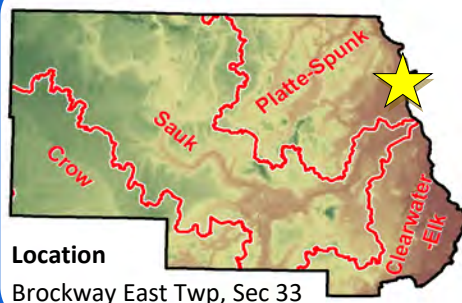
Watershed:

Platte-Spunk
(Mississippi River)

Project Description: This property on Mississippi River was very low land and was experience erosion occurring on the bank. Existing riprap was left in place. Much of the area was mowed very close to the river. The lawn grass was terminated. The project area was planted with native vegetation and erosion control blanket was installed to protect the planting until the planted native vegetation can become established. Out of almost 800 feet of Mississippi River Shoreline only 25 was left to lawn for the landowner to access their dock, the rest was naturalized!

Pollution Reduction Estimates:

Phosphorus	0.53 Lbs/Yr
Sediment (TSS)	0.50 Tons/Yr



Stearns County Soil and Water Conservation District
110 2nd Street South, Waite Park, MN 56387

Ph: 320-251-7800 x3
www.stearnscountyswcd.net

Shoreline Restoration Project

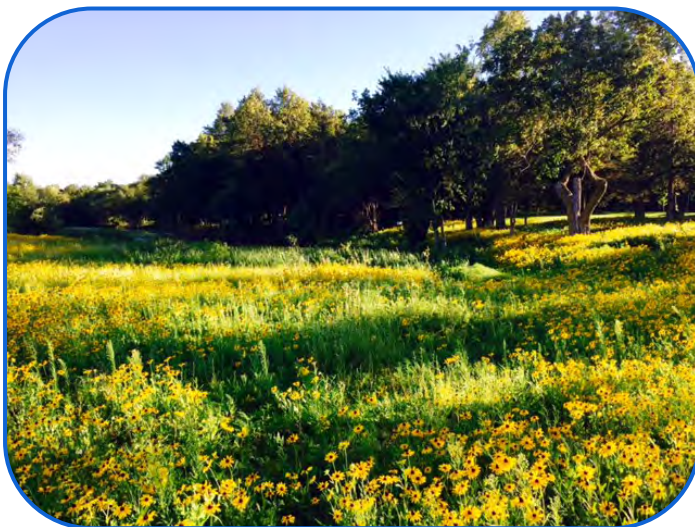
2014 Mississippi River



Failing Retaining Wall System



Planting Preparation



After Shoreline Restoration (same view as above!)

"The landowner felt this project would have many benefits. It would help protect their property while providing a great wildlife and esthetic value."

– Greg Berg, SWCD Lakeshed Specialist



Before Shoreline Restoration – Erosion Issues



Erosion Blanket & Planting

Funding:

State Funds*	\$ 10,783
Landowner Investment	\$ 3,594

* Administered by Stearns SWCD
DNR Aquatic Habitat Restoration Grant