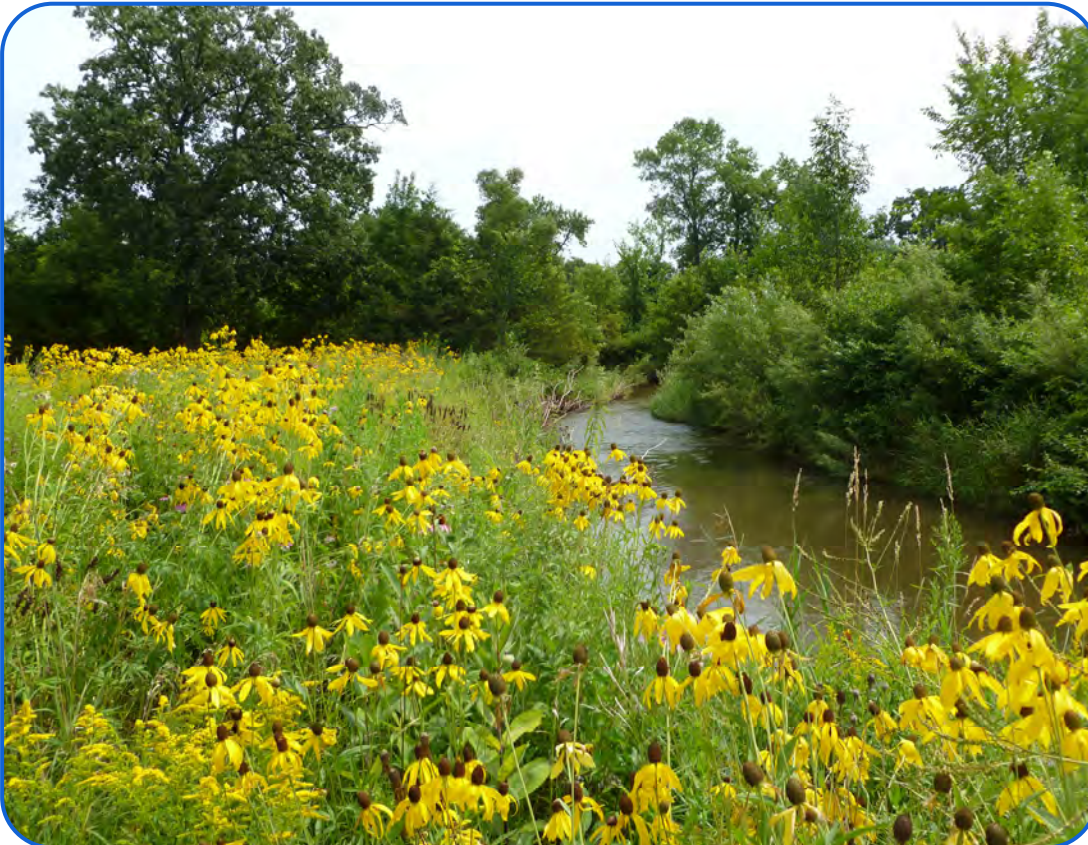


# City of St. Augusta – Kiffmeyer Park

## Streambank Stabilization



### Practice :

Streambank Stabilization

### Target Waters :

St. Augusta Creek

### Year Constructed :

2005

### Components :

- Root Wads
- Cedar Tree Revetments
- Coconut Erosion Control Blanket
- Field Stone Rock Riprap
- Native Grass and Wildflower Seeding
- Tree and Shrub Planting

### Benefits :

- Sediment Reduction
- Nutrient Removal
- In stream and upland habitat
- Preserve Trail

### Partners :

- BWSR
- West Central TSA
- DNR Fisheries

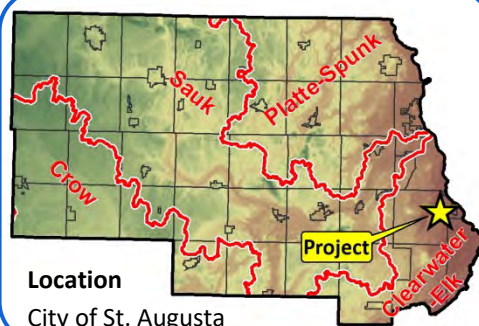
### Watershed :

Upper Mississippi River Watershed

**Project Description:** St. Augusta Creek, which runs through Kiffmeyer Park, had severely eroded banks from high flows. There was minimal protection in some areas because of excessive vegetation removal. In order to stabilize the banks, a combination of field stone rock riprap, cedar tree revetments and root wads were used along with native vegetation. Bio-engineering techniques were used to work with the stream channel in reducing the erosion and providing additional fish and wildlife habitat. In total, three major sections of the stream in Kiffmeyer Park were worked on and incorporated into the existing natural corridor.

### Pollution Reduction Estimates:

Phosphorus	21.74 Lbs./Yr.
Sediment	25.58 Tons/Yr.



Stearns County Soil and Water Conservation District  
110 2nd Street South, Waite Park, MN 56387

Ph: 320-251-7800 x3  
www.stearnscountyswcd.net

# City of St. Augusta – Kiffmeyer Park

Streambank Stabilization



Cedar Tree Revetment Installation

*“This project demonstrated the true value of bio-engineering and how it can work. The Cedar Tree Revetments captured an amazing amount of sediment”*

*– Greg Berg, SWCD Shoreland Specialist*



Root Wad Installation



Root Wad Placement



Project After Completion



Project After Completion

## **Funding:**

State Funds*	\$	12,302
Landowner Investment	\$	4,708

\* Administered by Stearns SWCD  
BWSR State Cost Share Funds  
MPCA 319 Funds